

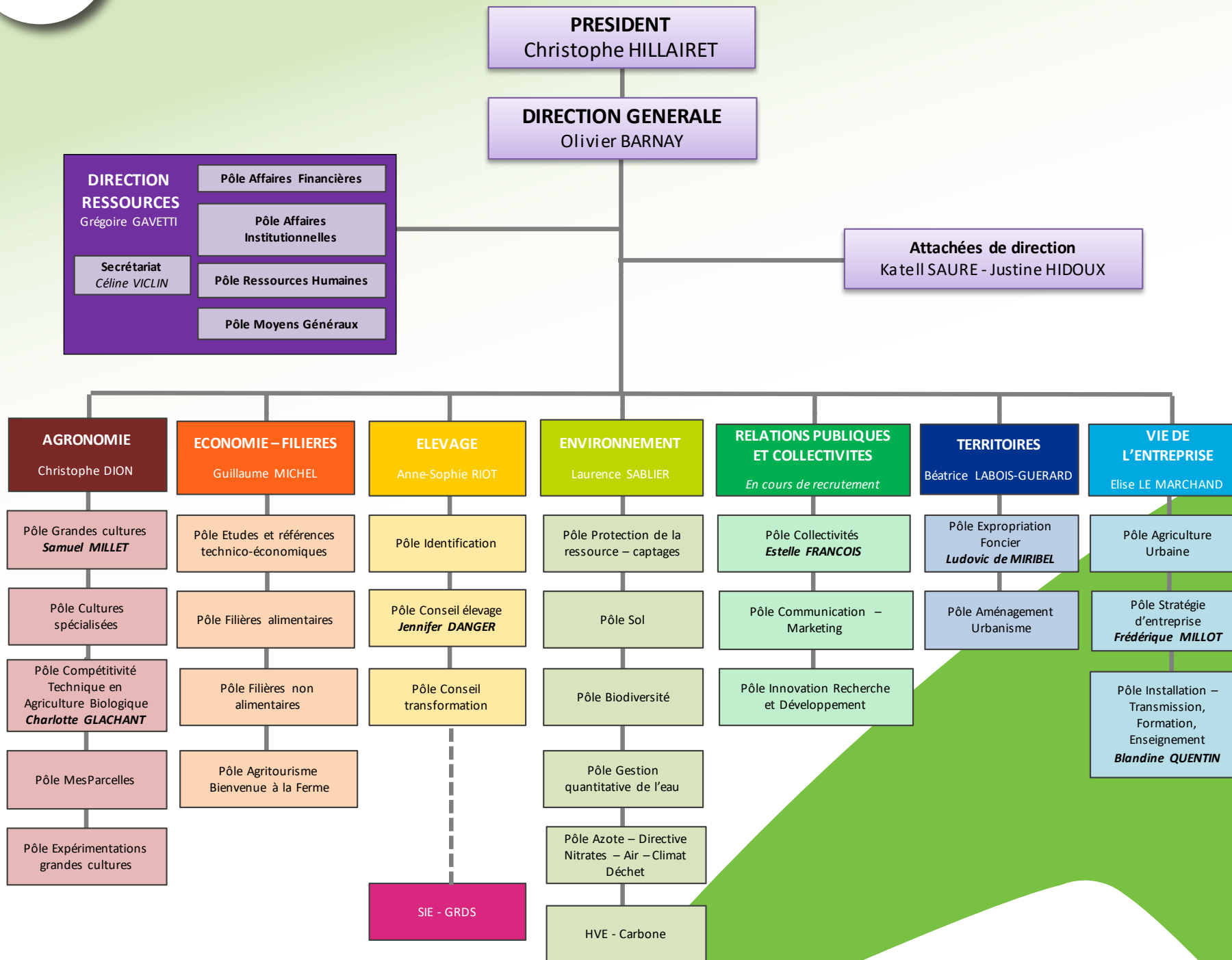


**CHAMBRE  
D'AGRICULTURE**  
DE RÉGION ILE-DE-FRANCE

# ORGANIGRAMME



# ORGANIGRAMME GENERAL





# DIRECTION RESSOURCES

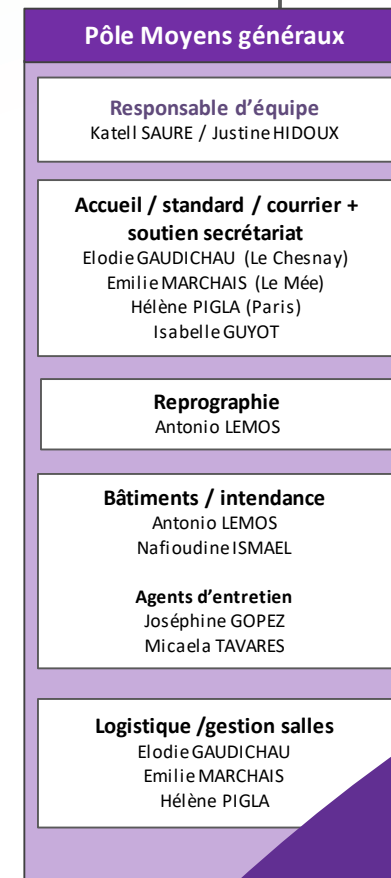
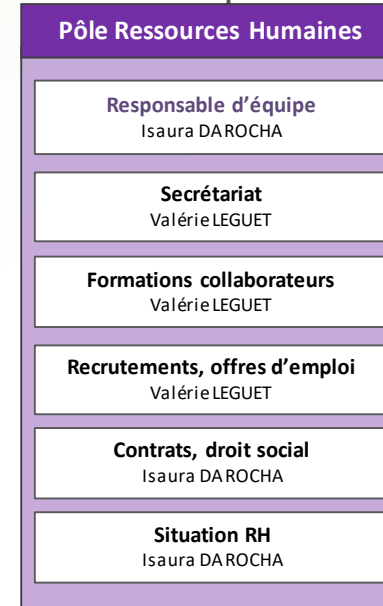
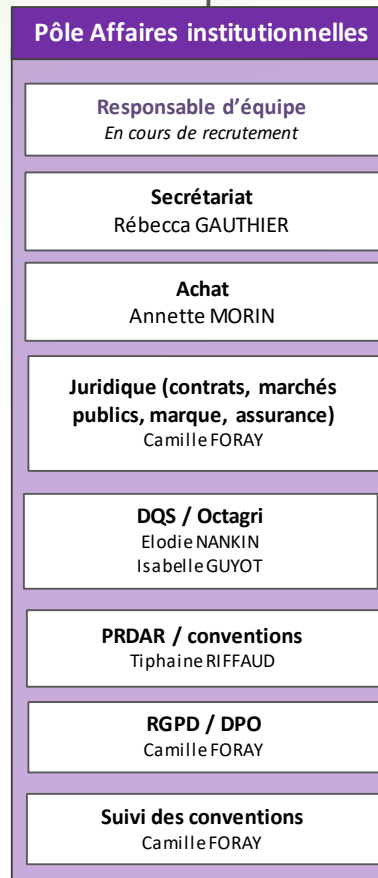
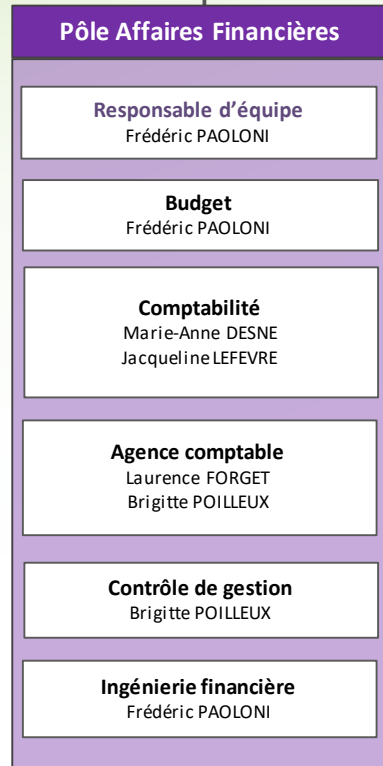
DNSI (Direction Nationale des  
Systèmes d'Informations) \*

Laurent ROBERT  
Sébastien PIVRON

SIG  
Guillaume FLAMME

Directeur Ressources  
Grégoire GAVETTI

Assistante de direction  
Céline VICLIN

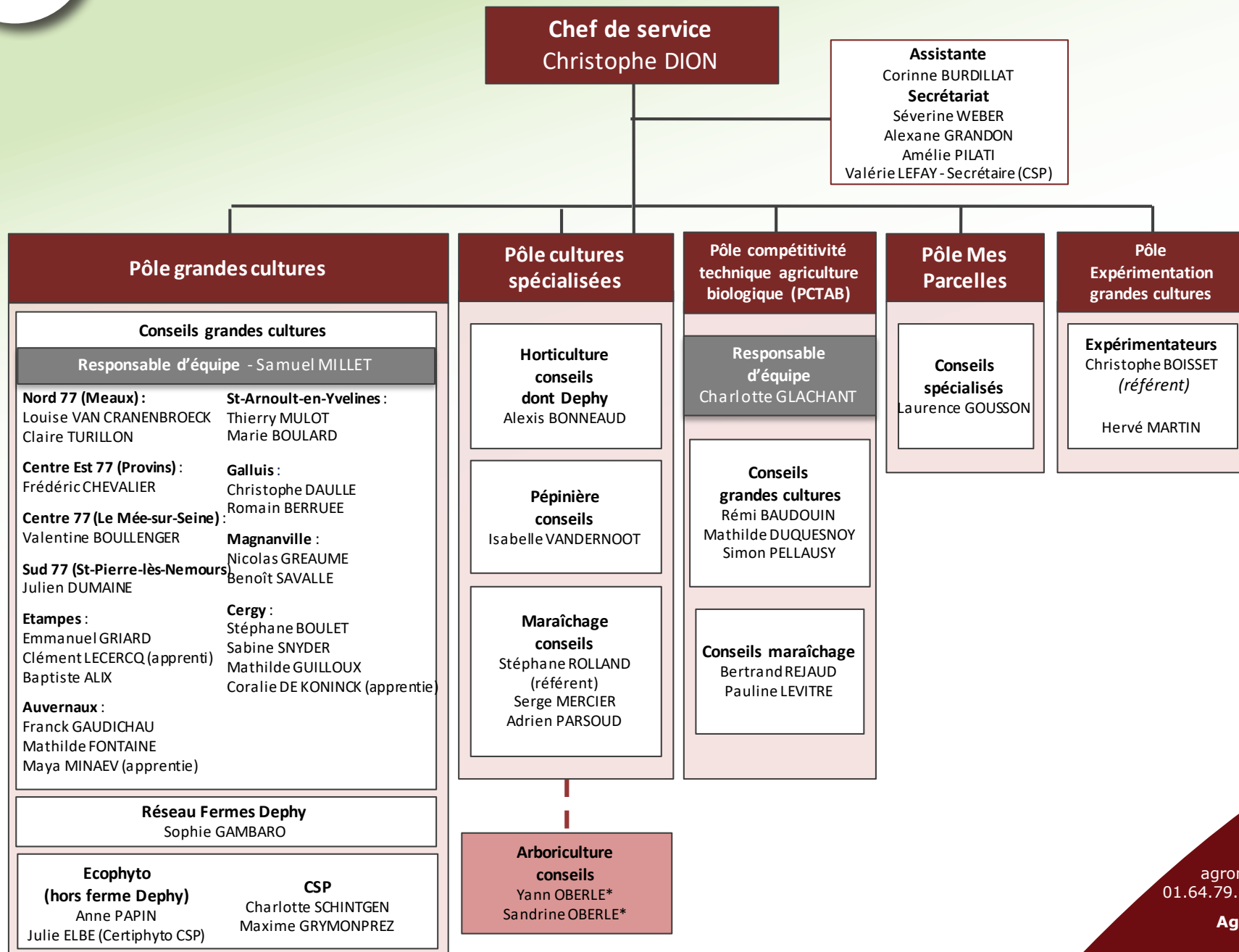


## CONTACTS

Accueil : 01 39 23 42 00  
accueil@idf.chambagri. fr



# SERVICE AGRONOMIE



## CONTACTS

**Secrétariat :**  
agronomie@idf.chambagri.fr  
01.64.79.30.75 - 01.39.23.42.40

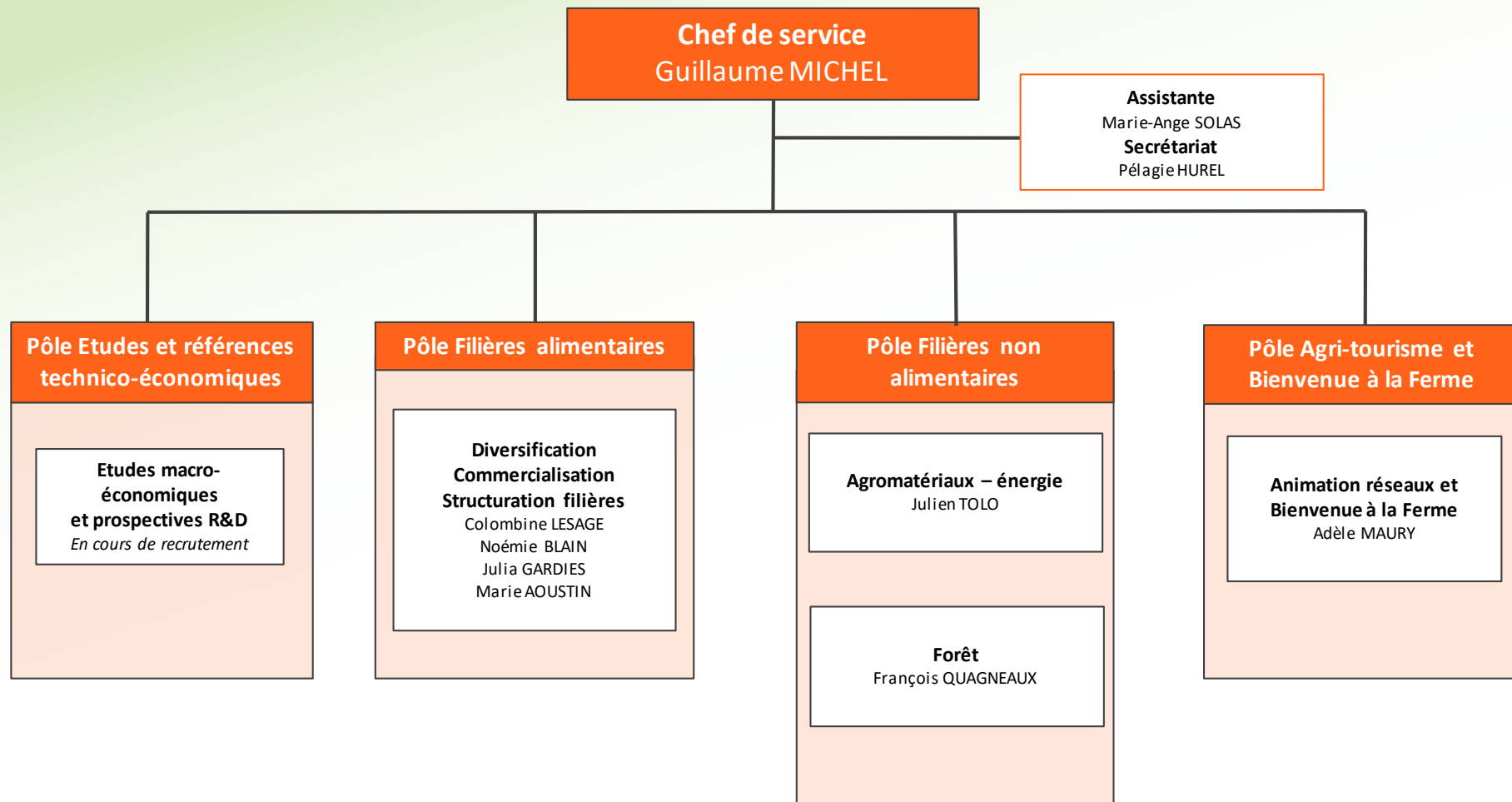
**Agriculture biologique :**  
pctab@idf.chambagri.fr

\* entreprise Conseilyo





# SERVICE ECONOMIE - FILIERES

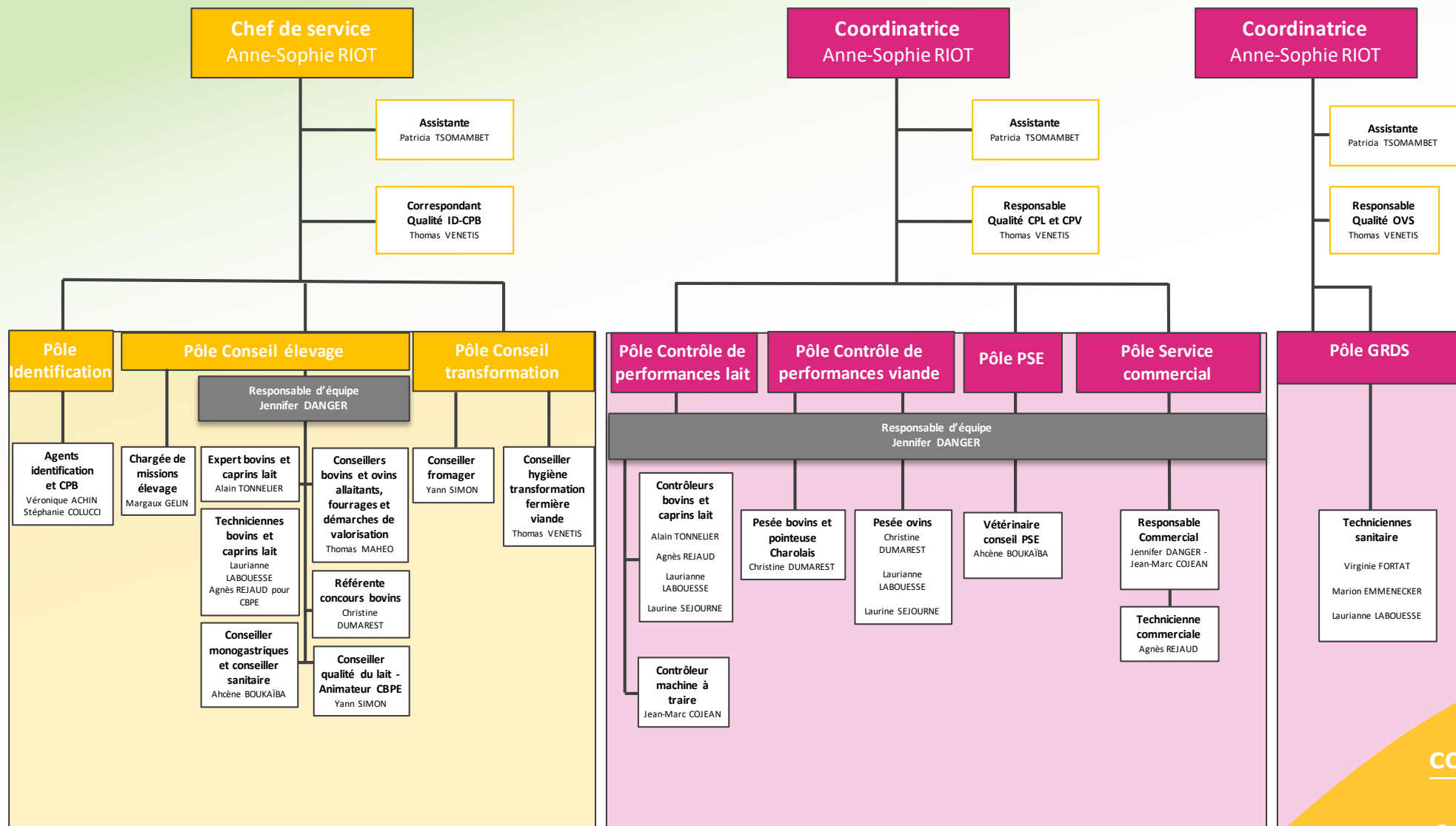


## CONTACT

**Secrétariat :**  
economie-filieres@idf.chambagri.fr  
01 39 23 42 17



# SERVICE ELEVAGE

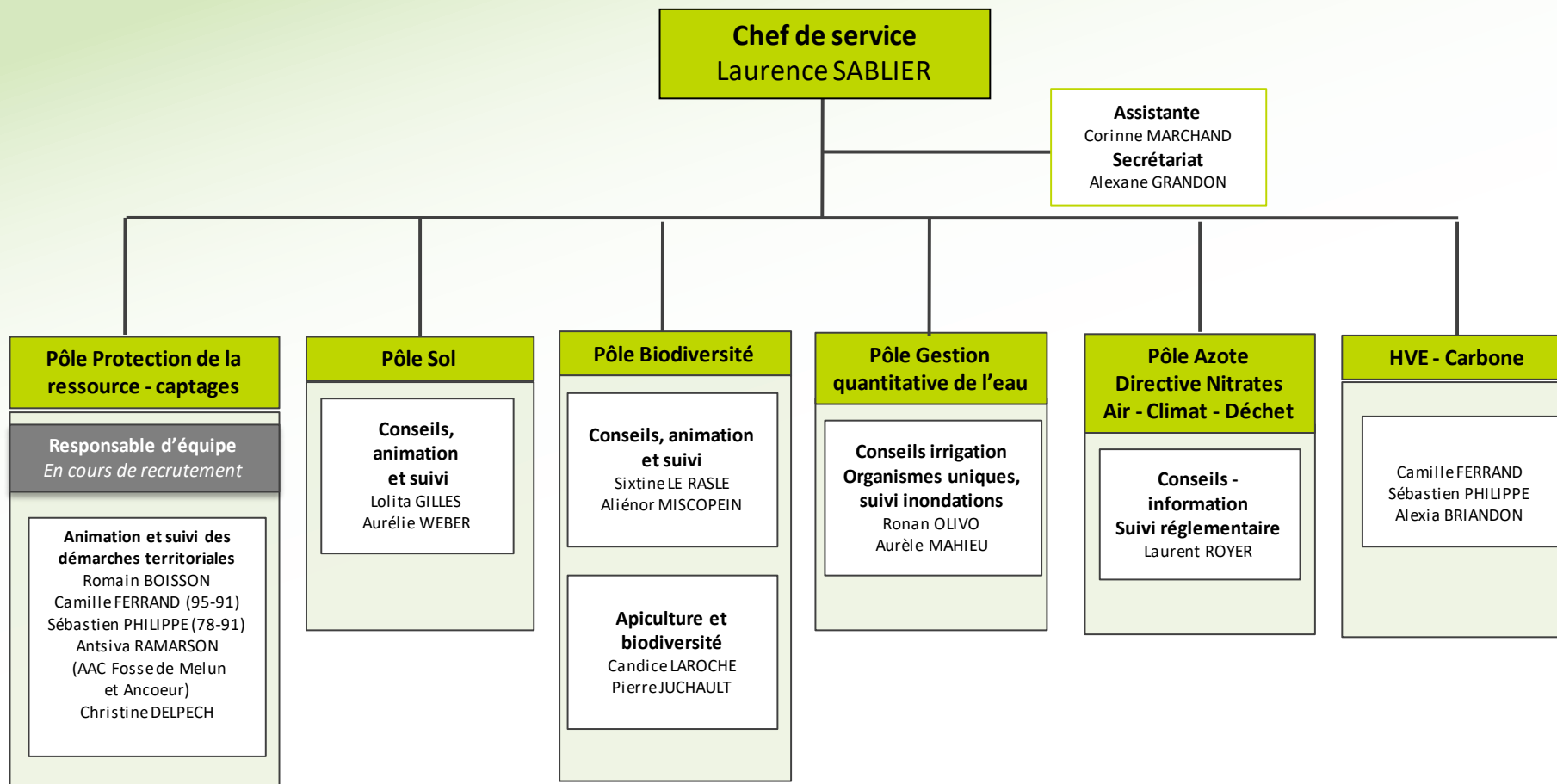


**CONTACT**

Secrétariat :  
elevage@idf.chambagri.fr  
01 64 79 30 08



# SERVICE ENVIRONNEMENT

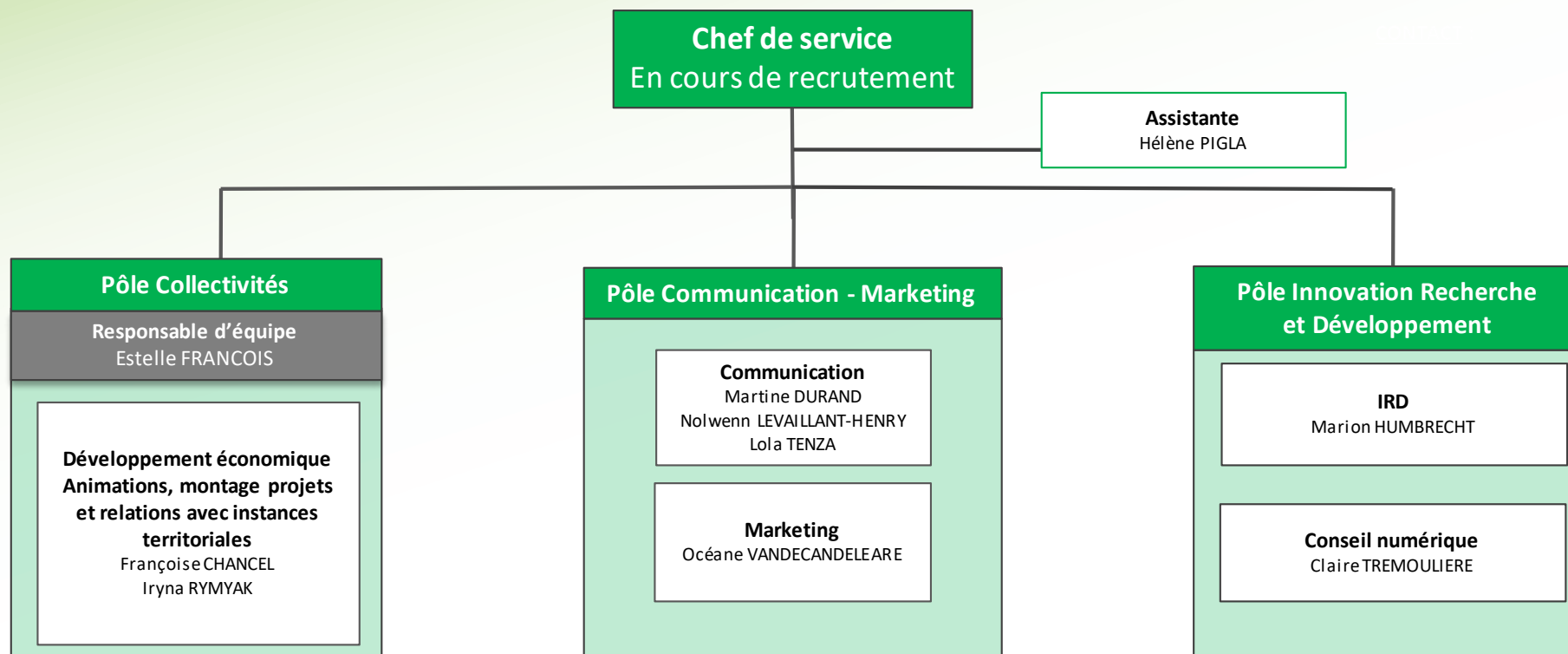


## CONTACT

**Secrétariat :**  
environnement@idf.chambagri.fr  
01 39 23 42 26  
01 64 79 30 63



# SERVICE RELATIONS PUBLIQUES et COLLECTIVITES



## CONTACT

Secrétariat : 01 42 36 73 51

Communication : 01.39.23.42.16

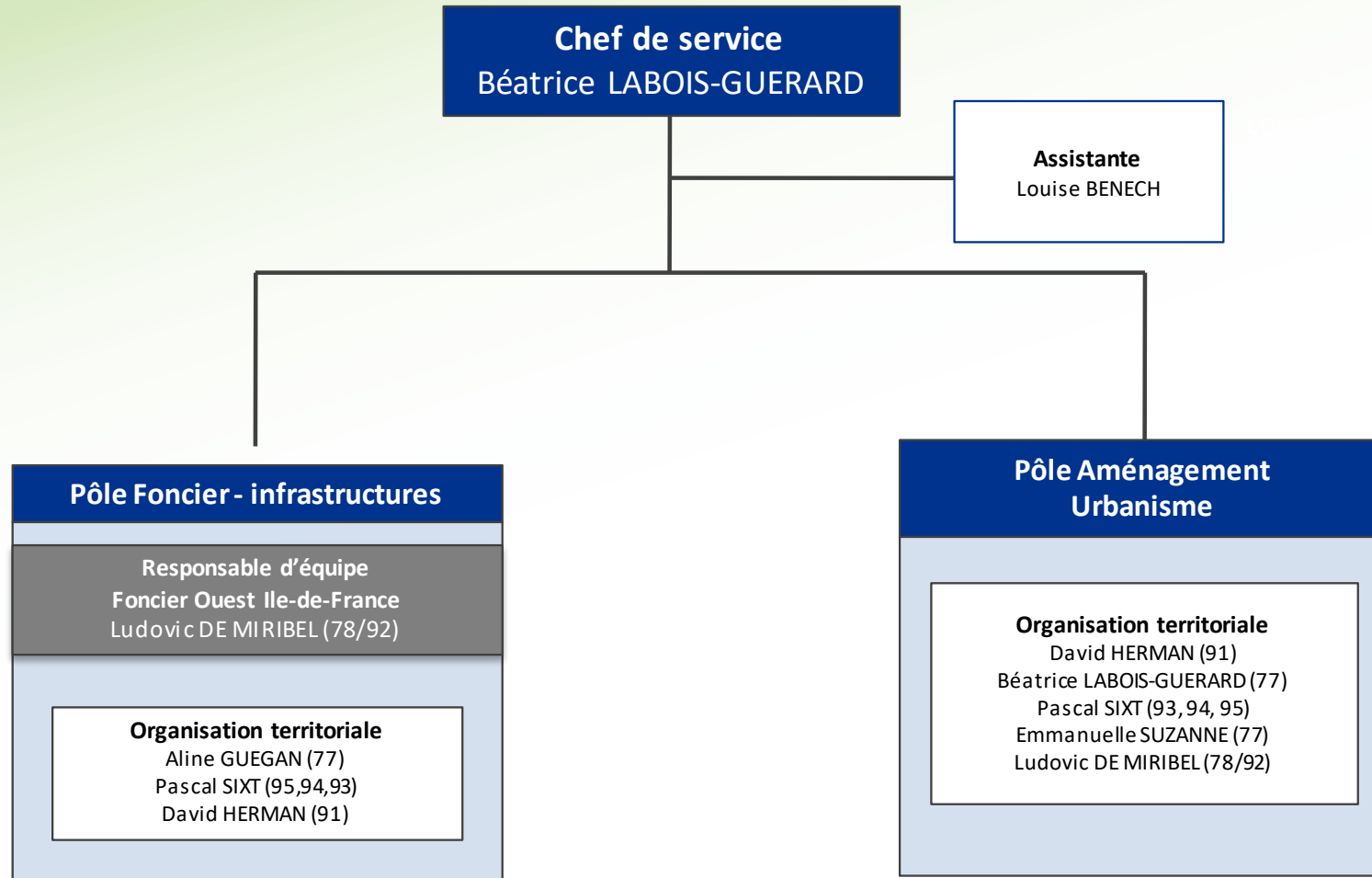
communication@idf.chambagri.fr

Innovation : innovation@idf.chambagri.fr





# SERVICE TERRITOIRES

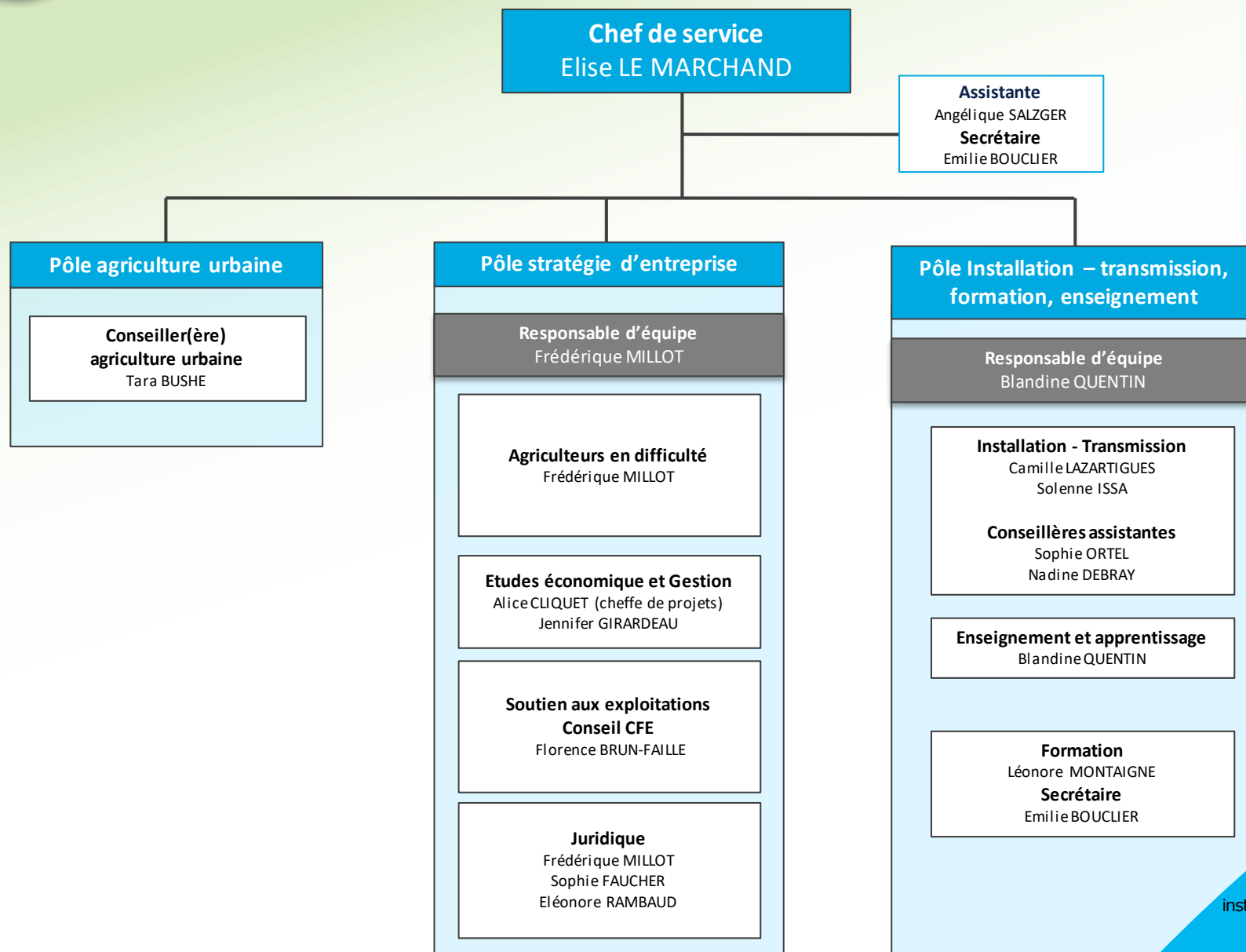


## CONTACT

**Secrétariat :**  
territoires@idf.chambagri.fr  
01 64 79 30 71



# SERVICE VIE DE L'ENTREPRISE



## CONTACTS

**Service** : 01 64 79 31 00  
service-entreprise@idf.chambagri.fr

**Installation-transmission** :  
installation-transmission@idf.chambagri.fr

**Conseil juridique** :  
juridique@idf.chambagri.fr

**Dispositifs d'aides** :  
dispositifs-aides@idf.chambagri.fr

**Formation** : formation@idf.chambagri.fr